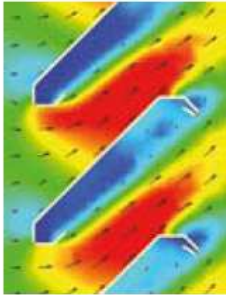


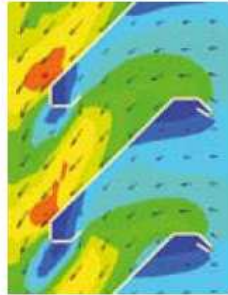
## EFD simulation

Classic W 60C

IN



OUT



**K-factor**

Intake : 10.05

Ce: 0,32

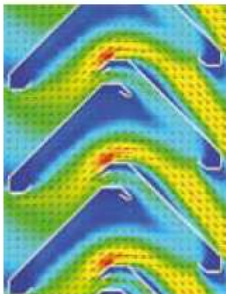
**K-factor**

Exhaust : 10.75

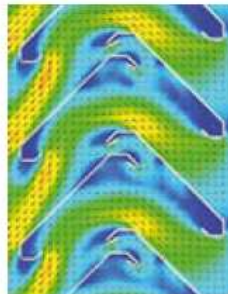
Cd: 0,30

Classic W 60C/2

IN



OUT



**K-factor**

Intake : 23.09

Ce: 0,21

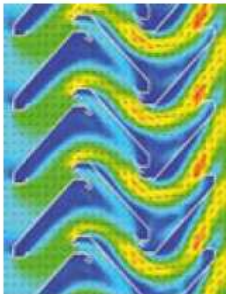
**K-factor**

Exhaust : 26.13

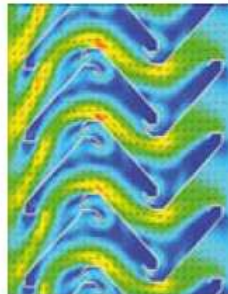
Cd: 0,20

Classic W 60C/3

IN



OUT



**K-factor**

Intake : 31.06

Ce: 0,18

**K-factor**

Exhaust : 42.78

Cd: 0,15